

# What we offer

## ON SITE WORKSHOPS

Visit the Museum and explore the 17th century with re-enactors, object handling, and interactive activities. See real artefacts that belonged to Cromwell, discover what they can tell us about him, and talk to experts about the period.

## VIRTUAL AND CLASSROOM WORKSHOPS

We bring our workshops to your classroom virtually, or in person. Experience all the benefits of visiting the Museum, but within your timetable, without travel costs, and in the safety of your school environment.

## LOAN BOXES AND CLASSROOM RESOURCES

Our loan boxes are full of exciting real and replica objects, images, and documents accompanied by engaging and hands-on activities, while our digital resources support your teaching of Cromwell through videos, resource packs, worksheets, and more.



# Prices and booking information

## PRICES

- **On site workshops:** £5.00 per pupil (minimum charge of £50 per group)
  - **Off site and virtual workshops:** £60 per class
  - **Loan boxes:** £40 for one week or £50 for two weeks.
- Adult staff, helpers, and carers are not charged for.

## GROUP SIZE AND RATIOS

The maximum number of students that can be accommodated at any one time is 30 (or one class). If you would like to visit with multiple classes, please contact us to discuss arrangements. All groups must be accompanied by responsible adults. We recommend a minimum ratio of 1 adult to 15 children.

We are happy to arrange planning visits for staff at no additional charge. We also able to tailor our on-site and virtual workshops to your needs, both in terms of length and content.

## GETTING TO US

Coaches may drop off/pick up the group in Huntingdon Bus Station, less than 2 minutes walk from the Museum. The nearest car park is behind the Museum on St Germain Street (pay and display). The Museum is about 8 minutes' walk from Huntingdon Railway Station, which is on the East Coast line with regular trains from King's Cross and Peterborough.

## FACILITIES

Toilet facilities are available for schools use in Huntingdon Town Hall, opposite the Museum on a pedestrianised street. Secure bag storage and lunchroom facilities are also available in the Town Hall.

## HOW TO BOOK

To book, contact our learning team on **01480 702216** or email [learning@cromwellmuseum.com](mailto:learning@cromwellmuseum.com). We welcome planning visits for staff at no additional charge, and pre-visit resources are available to familiarise your students with museums, object exploration, and looking at portraits.

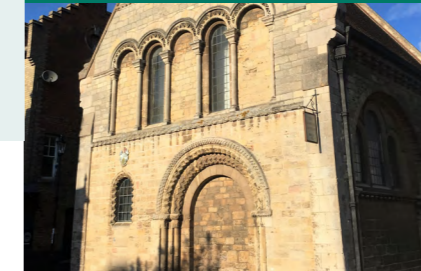
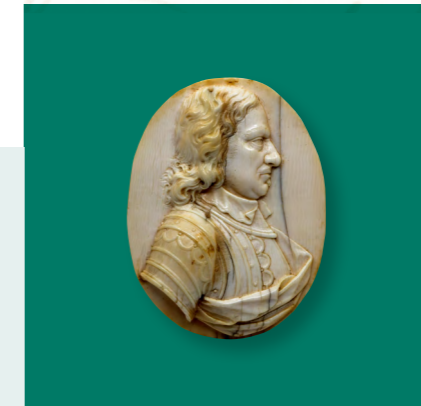
## ABOUT THE CROMWELL MUSEUM

The Cromwell Museum holds the best collection of objects relating to the life and times of Oliver Cromwell on public display in the world. The collection consists of over 800 items, including personal items belonging to him and his family, portraits, arms and armour, and historical documents written by or about Cromwell.

Oliver Cromwell (1599 – 1658) is one of the most important figures in British history. As a result of the British Civil Wars of the mid-17th century he became a soldier and a statesman of lasting fame and influence. He is the only commoner ever to have been the head of state in England. Cromwell is still a very controversial figure in British history, hated by some, held as a great man by others. The Museum tells his story 'warts and all', and invite visitors to make their own minds up about him.



# Learning Programme





# Why visit us?

Was Cromwell a hero or a tyrant? Did he really cancel Christmas? How did he rise from humble origins in Huntingdonshire to shape the history of an entire country?

Discover who Cromwell really was, behind the myths, in our programme of workshops and resources led by our experienced and knowledgeable staff and costumed re-enactors.

Whether you visit the Museum, borrow a loan box, or bring us into your classroom virtually, your students will examine original objects, paintings, and documents in our unique collection to learn more about topics including local history, society and culture in the 17th century, the history of democracy and parliament in Britain, and more.

Our workshops and resources are designed with the national curriculum and exam boards in mind, and use the objects, paintings, and documents in our collection, as well as our expert staff and talented costumed re-enactors, to bring Oliver Cromwell and the British Civil Wars to life.



# Workshops



## KEY STAGE 3

### History

**Who was Oliver Cromwell?** – Explore objects, portraits, and documents to learn about the life of Oliver Cromwell, who was born and raised in Huntingdon and later lived in St. Ives and Ely. Find out how he became one of the most important historical figures in Britain and examine the evidence behind his most infamous controversies.

**Civil War!** – Why was there a Civil War in Britain? Discover the causes and events of the Civil Wars and find out what life was like for those who fought in them. Examine original arms and armour, handle replica items and meet a Civil War soldier.

**Cromwell's Huntingdon** – Go on a walking tour of historic Huntingdon! Discover what Huntingdon looked like during Cromwell's childhood and see how it has changed since then.

### Art and Design

**Pictures of the Past** – What do portraits tell us about people from the past? Examine our remarkable collection of 17th century portraits to find the clues about the people in them. Then, create your own portrait in your sketchbook.

## GCSE AND A-LEVEL

### History

**Discussing Cromwell** – Tour the Museum and analyse original artefacts, paintings, and documents, then participate in a Q&A and discussion session with our Curator and other experts. Topics can include: the life of Oliver Cromwell; his role in the Civil War, the trial and execution of Charles I, and the Protectorate; the short and long-term legacy of Cromwell and the Civil Wars.

**Discussing the Civil Wars** – Discuss the causes, events, and short and long-term impacts of the British Civil Wars in this talk and Q&A session with our Curator. Topics can include: the road to war (including the role of social, political, and religious divisions); the creation and importance of the New Modelled Army; the subjugation of Ireland; imperial expansion and the Western Design; the Commonwealth; the Protectorate; the Restoration.

**The Huntingdon Witch Trials** – Huntingdon is known as the witch trial capital of England, with witch trials occurring in the 16th, 17th, and 18th centuries. In this talk and Q&A session, our Curator explores the history of witchcraft beliefs and witch-hunting in England, Matthew Hopkins and the East Anglian 'witch craze' in the 1640s, and the Huntingdon witch trials. Alternate topics can include Huntingdon's history, Crime and Punishment (using the 17th century courtrooms in Huntingdon Town Hall), or careers in Museums, Heritage Management and Tourism.

*'The students enjoyed the virtual workshop! They got a lot out of it and found the information really clear and it very much tied into their current unit on witchcraft.'*  
– Sixth Form Teacher

THREE

FOUR/POST-16

# Loan Boxes and Classroom Resources

## KEY STAGE 3

### History

**Who is Oliver Cromwell? Loan Box** – Explore who Oliver Cromwell was by exploring and interpreting artefacts, sequencing events on a timeline, and learning how our knowledge of the past is constructed from sources. This loan box contains replica objects, documents, and lesson plans.

**Who is Oliver Cromwell? Classroom Video** – Who was Oliver Cromwell, and what can the objects in our collection tell us about him? This video is a fully facilitated lesson on Oliver Cromwell's life and legacy, accompanied by a worksheet and suggestions for follow up activities.

*'We really enjoyed using the loan box in lessons to help bring the past alive to the students, and the pupils seemed to really enjoy working independently to learn more about the life of Cromwell!'*  
– Year 8 Teacher

## GCSE AND A-LEVEL

### History

**Oliver Cromwell: Warts and All** – Join our Curator in this series of bite-sized videos designed to support lessons on Cromwell and the Civil War. Topics include: whether Cromwell was 'king in all but name', the Battle of Naseby, and Cromwell's contested legacy.

**'All People One': The Putney Debates** – Created in partnership with the UK Parliamentary Archives to commemorate the 375th anniversary of the Putney Debates, this resource uses primary sources to examine the emergence of political and religious radicalism in 1640s, politicisation of the New Modelled Army, and the events and legacy of the historic Putney Debates.

# Topic Packs

## KEY STAGE 3

### History

#### Evidence for Cromwell and his Life

Explore objects, portraits, and documents to discover facts and opinions about Cromwell's life, learn to distinguish between the two, and ultimately decide on your own opinion of Cromwell based on evidence. This session can be booked on its own or as part of a topic pack with the Norris Museum, with a loan box included for use in the classroom for free.

#### Oliver Cromwell's House

Explore Cromwell's private and public life in this topic pack offered in partnership with Oliver Cromwell's House in Ely, where he lived for a decade before his world changed in 1642. Additional charges apply, contact us to find out more.

		On site	Virtual	Classroom
<b>WORKSHOPS</b>				
<b>KS3</b>	Who was Oliver Cromwell?	•	•	•
	Civil War!	•	•	
	Evidence for Cromwell and his Life	•		
	Cromwell's Huntingdon	•		
<b>KS4 / Post-16</b>	Pictures of the Past	•	•	•
	Discussing Cromwell	•	•	
	Discussing the Civil Wars	•	•	
	The Huntingdon Witch Trials	•	•	